

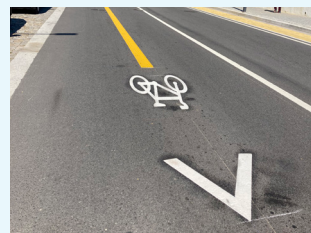
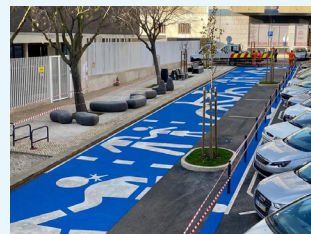
# Reflective and skid resistant preformed thermoplastic



## Signs and symbols ready for application

ENNIS-FLINT® by PPG THERMALINE® preformed thermoplastic markings are ideal for marking areas such as symbols for parking bays, “kiss & ride” and wayfinding such as direction arrows and high-risk areas such as intersections.

Depending upon regulatory requirements or specific application purposes, Thermaline pavement markings can be manufactured with visibility boosting retroreflective beads and/or safety enhancing anti-skid elements.



### Formulation

- Proven durability when tested according to EN13197
- Engineered to provide optimal performance and lasting value
- Formulated for enhanced skid resistance, superior retroreflectivity and visibility



### Installation

- Pre-cut, interconnected signs and symbols that are ready to use out of the box
- Simple application with a propane heat torch
- Can be installed year round
- Heat indicators guide proper application



### Key Benefits

- Quick installation time allows for minimum traffic interruptions
- Available in 2.5-3 mm thickness
- Can be applied on Robur Plast



### Certification

- Facility is BS EN ISO 9001:2015 certified for the design, development and manufacturing of preformed thermoplastic
- Environment management system certification according to BS EN ISO 14001:2015

This document contains general information only and should not be construed as creating any warranties, express or implied. Please contact a PPG representative for additional information.

The PPG Logo and Thermaline are registered trademarks and We protect and beautify the world is a trademark of PPG Industries Ohio, Inc. Ennis-Flint is a registered trademark of the PPG Group of Companies. The IN Logo is a registered trademark of LinkedIn Corporation.

