

THE ORIGINAL CHICKEN S

# REINFORCE YOUR BRAND

TrafficScapes®

Surface Systems

By



**ENNIS-FLINT**  
The Mark of Traffic Safety®



# TRAFFICSCAPES®

## SURFACE SYSTEMS

### A PORTFOLIO OF PREFORMED THERMOPLASTIC HORIZONTAL SURFACE BRANDING PRODUCTS



#### DECOSIGN®

##### SURFACE SIGNS

Custom horizontal surface signage engineered to last 6 to 8 times longer than paint. Design and color combinations are virtually endless.



#### DURATHERM®

##### INLAID SURFACE SYSTEM

Engineered to lie slightly below the asphalt surface, the material is protected from wear, keeping its attractive contemporary look for years.



#### TRAFFICPATTERNSXD®

##### IMPRESSED SURFACE SYSTEM

Designers have the flexibility to create their ideal streetscape design with interconnected sheets of custom color and pattern combinations.




#### TRAFFICPATTERNSLT®

##### OVERLAY SURFACE SYSTEM

Designed to flow into the grooves of previously stamped patterns, it's more durable and skid-resistant than typical epoxy coatings or paint.



An aerial photograph of a city intersection. The pavement features a large, bold yellow 'X' in the center, surrounded by white grid patterns that radiate outwards. Several people are walking on the sidewalks, and a palm tree is visible in the lower-left corner. A small blue and white structure is located near the top center.

**TrafficScapes® Surface Systems** Each product offers its own unique application and performance approach to branding projects where customer experience, durability, safety, and aesthetic appeal need to work in conjunction.

---

### **TrafficScapes®** preformed thermoplastic

- Lasts 6-8 times longer than paint
- Heavy-duty, intersection-grade pavement marking material
- Simple 3-step application process





The Chick-fil-A® logo and "Home of the Original Chicken Sandwich" are registered marks of CFA Properties, Inc.



The "M" design is a registered mark of McDonald's Corp.





The NFL® logo is a registered mark of the National Football League



Kroger® is a registered mark of the Kroger Co.



The Harley Davidson® logo is a registered mark of H-D U.S.A.



The "Pickup" design is a registered mark of Walmart/Apollo, LLC.



DURATHERM® INLAID SURFACE SYSTEM



TRAFFICPATTERNSXD® IMPRESSED SURFACE SYSTEM



The TrafficPatternsXD® material shown has been in use for 5 years.





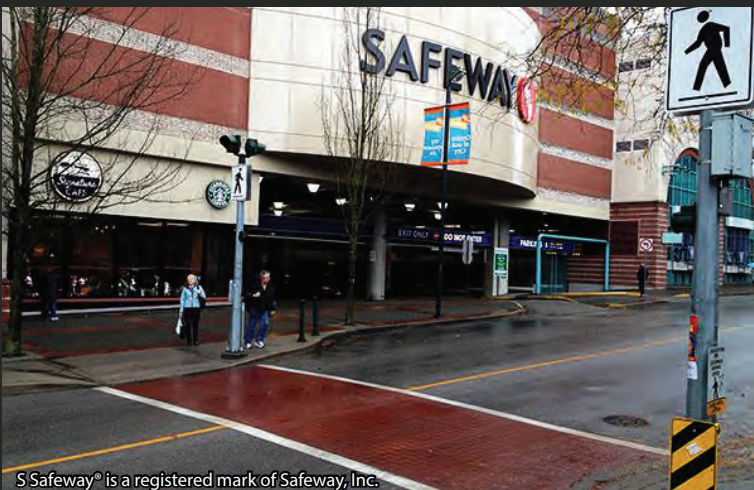
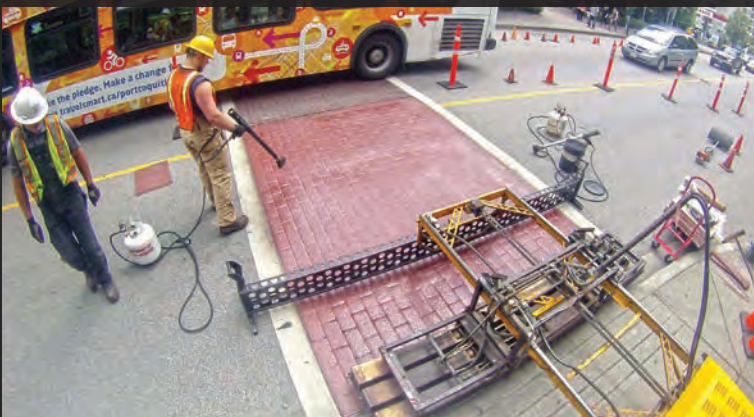
## PREMARK® PREFORMED THERMOPLASTIC PAVEMENT MARKINGS



Nissan® is a registered mark of Nissan Motor Co. Ltd.



## TRAFFICPATTERNSLT® OVERLAY SURFACE SYSTEM



S Safeway® is a registered mark of Safeway, Inc.







**ENNIS-FLINT®**  
The Mark of Traffic Safety®

Phone: 800.331.8118   [www.ennisflint.com](http://www.ennisflint.com)   [sales@ennisflint.com](mailto:sales@ennisflint.com)  
© 2020 Ennis-Flint, Inc.   MKT-00128-ENG-200505